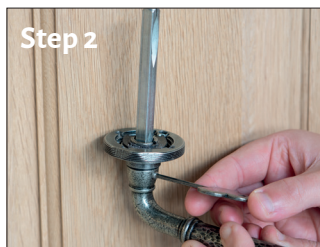


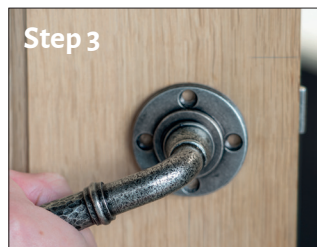
Step 1

Firstly, fit the spindle into the back of one of the Lever on Rose handles.



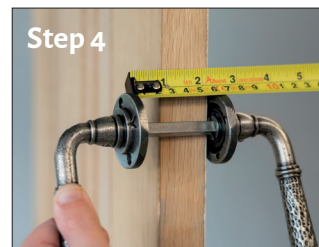
Step 2

Ensure the grub screw is aligned with the split grooved area in the spindle then tighten the grub screw into the spindle using the Allen key provided.



Step 3

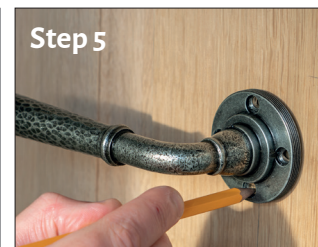
Once the spindle is secured in the handle, pass it through the hole in your door, ensuring that the lever is the correct way up in terms of spring action.



Step 4

Two different lengths of spindle are provided but you may still need to adjust the spindle length to suit. Attach the remaining handle to the other side of the spindle and measure the excess spindle showing. Cut half of that measurement from both ends of the spindle using a hacksaw.

Once completed, reattach the spindle and handles to the door again.



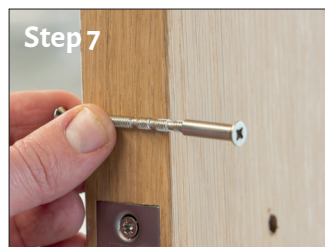
Step 5

Ensure the handles are straight on both sides of the door and mark the fixing holes with a pencil.



Step 6

Remove the handles from the door. Keep one handle fastened to the spindle, ready to re-fit later. For male & female Bolts, drill holes large enough to allow M4 screws to pass all the way through the door. Do not drill holes all the way through for the wood screw holes, only pilot holes are needed for these. The number of bolt through fixings you can use will depend on the type of lock/latch you have installed on your door.



Step 7

Again, dependant on the thickness of your door, the male & female bolts may need to be cut down to size.

Position the bolts alongside the edge of the door to compare lengths, take into consideration the extra thickness needed for the handle baseplate and cut away any excess length with a hacksaw.

Your choice of latch or lock will determine how many bolts you may be able to use, fit wood screws in all other instances.



Step 8

Assemble the spindle and handles on the door again, ready to fix in place. Feed the male bolt through the fixing hole and connect the female end to the other side. Repeat for all bolts, evenly tightening with a hand-held screwdriver. If unable to use bolts, tighten wood screws to secure the baseplate to your door.

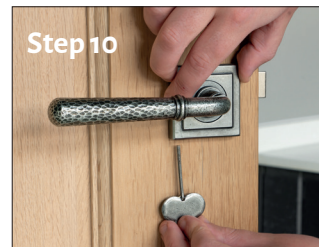
When all bolts/screws are secured, fasten the grub screw on the second handle and check all fixings are secure. The handle should now function properly.



Step 9

Place and screw on the outer rose covers until securely fastened against the surface of the door.

If you are using the Square/Diamond cover, please see the next two steps.



Step 10

To fasten the Square rose cover on to the handle, slide the cover on and position it so that the angled grub screw will screw into the ground area on the threading.

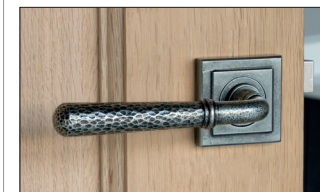
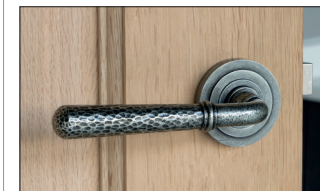
Lightly screw in the grub screw using the Allen key provided to secure the cover in place.



Step 11

To fasten the Diamond rose cover on to the handle, slide the cover on and position it so that the angled grub screw will screw into the ground area on the threading.

Lightly screw in the grub screw using the Allen key provided to secure the cover in place.



Concealed Lever On Rose - Fitting Guide

Please note that this fitting guide is written on the assumption that a lock/latch which is suitable for this product is already fitted to the door. Both wood screws and bolt through fixings (male & female bolts) are provided. Assuming your device allows, our recommendation would be to fit using the bolt through fixings for a more secure & stable fit.

From the
Anvil[®]
Specialist Manufacturers of Ironmongery & Lighting