



HANDFORGED
TRADITIONAL
IRONMONGERY

A GUIDE TO:

Buying and Fitting Lever Handles

Lever Handles have been used for centuries to allow access to any door in your home and often create the first and lasting impression. All lever handles come in many different shapes and styles, in a number of our traditional and modern finishes and can be used for every door in your home.

Our lever handles come in sprung or unsprung versions and what this means is whether there is a spring incorporated into the handle which will always allow the lever to return back to the horizontal position (original starting position). If a handle is unsprung then the only part which will try to return the lever back is the spring inside your latch or lock. This would need to be a heavy duty spring to allow this to happen so choosing your handle is also related to what lock or latch you will be using.

This how-to guide demonstrates how to fit a lever latch handle to a mortice latch which is in the door already but this guide can be used as a template for fitting many of our lever handles and indeed our door knob sets. If you need specialist advice please seek our F.A.Q. page on the website or get in touch with our technical team who will gladly answer your queries.



Disclaimer: These fitting instructions are designed as a guide only and no responsibility can be taken by From The Anvil or it's stockists regarding damage to your property or product. It is advised that you seek professional advice before attempting this process.



A GUIDE TO: *Fitting a Lever Handle*

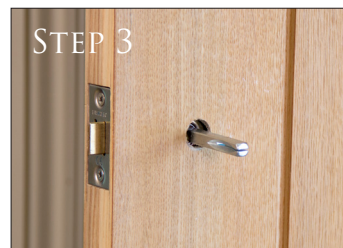


This guide is following on from our other guides regarding latches or locks and presuming you already have these fitted or are replacing existing handles.

Firstly decide the height at which you want your door handle/knob to be and can be varied depending on what is a comfortable or what is on an existing door.



Firstly you will need to fit the spindle (square metal bar) to the back of one of your handles. This spindle will then pass through the hole in your door which when turned will operate the latch (or lock) mechanism already fitted in your door.



The spindle provided is designed to be used with a range of door thickness's so you may need to adjust the length depending on your door. You can check this by fitting the second handle to the other side of the door and seeing how much (if any) spindle is spare (still showing). Measure this amount and go to step 4.



Once you have measured the amount of spindle that needs to be removed mark it on the end of the shaft and using a decent hacksaw remove that portion.

Take care after cutting as there may be sharp shards of metal which may need to be filed down.

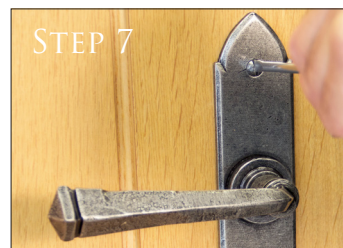


When you are happy with the fitting of both handles and the spindle length it is time to begin fixing the handles in place.

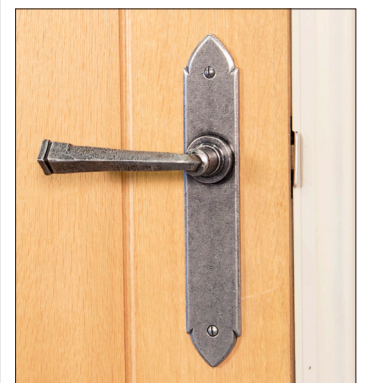
Firstly make sure the handle is straight on both sides (advisably use a spirit level) and mark with a pencil the fixing holes.



Once you have marked everything up drill a hole that goes the complete way through the door as in this how-to we will be using male to female bolt through fixings. Wood screws can be used just no need to drill all the way through the door. The bolt-through fixings give a much better result.



The male/female fixings will probably need to be cut down to size depending on the door thickness. This can be done by eye. Simply offer up the bolts to the edge of the door, taking into consideration the thickness of the handle backplate, and cut with a hacksaw down to desired length. Fix with a screwdriver each side of the door.



This how-to-guide can be used for many types of latch, deadbolts and even some sash and bathroom locks with a few adjustments here and there. Please seek professional advice to find the ideal product for your needs.